

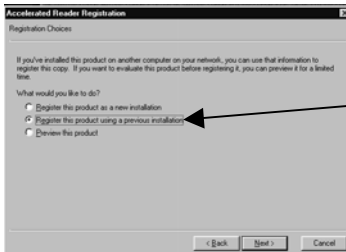
# Registering Accelerated Reader

Once you open AR you will be prompted to register.



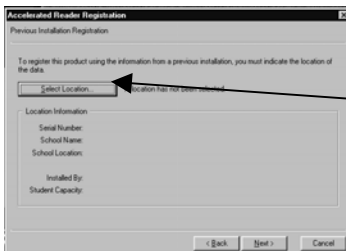
Choose **Next**.

1



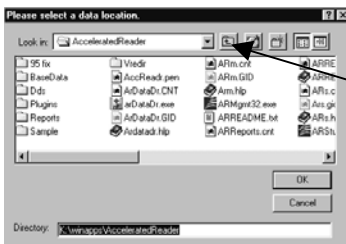
Select **Register this product using a previous installation**. Then **Next**.

2



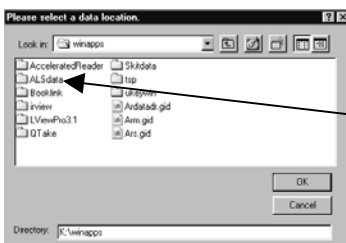
Choose **Select Location**.

3



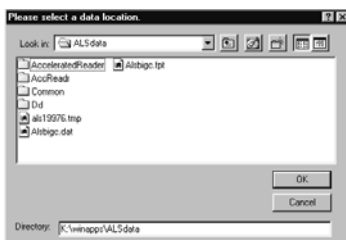
Click the **up one folder** button.

4



Double-click on **ALSdata**.

5



Click **OK**, then **Next**, then **Finish**.

6

Now it should be ready to use!